

Baca Grande Water and Sanitation District  
Monthly Operations Report

December 11<sup>th</sup>, 2024



Inside of MHE Water Storage Tank

## Facilities and Staff Updates

In Service

Repaired  
last month

Out of  
Service

Water Facilities											
Well 18		Moonlight Transfer Station		Ridgeview Transfer Station		Fallen Tree Transfer Station		Pinecone Booster Station		Shumei Booster Station	
Pump 1	Pump 2	Pump 1	Pump 2	Pump 1	Pump 2	Pump 1	Pump 2	Pump 1	Pump 2	Pump 1	Pump 2

Wastewater Facilities									
Aspen WWTP		Stables Lift Station		Wagon Wheel Lift Station		MHE Lift Station		Dharma Ocean Lift Station	
Pump 1	Pump 2	Pump 1	Pump 2	Pump 1	Pump 2	Pump 1	Pump 2	Pump 1	Pump 2

Service Vehicles				
Truck 1	Truck 2	Truck 3	Truck 4	Truck 5

Equipment				
Vector Truck	Dump Truck	Backhoe	Skid steer	Excavator

➤ **One Equipment Failure. No Vehicle Failures or updates to report**

- Pump 1 at MHE lift station is out of service

➤ **Accidents**

- No Accidents to report on

## Operations Updates

### ➤ Aspen Wastewater Treatment Plant

- Spoke with fluidyne about some upgrade options.

### ➤ 1 Leak on Peaceful way

- A customer called in a leak on Peaceful way the operations was able to repair with minimal interruptions to service.

### ➤ Projects

Annual maintenance projects are completed for the season

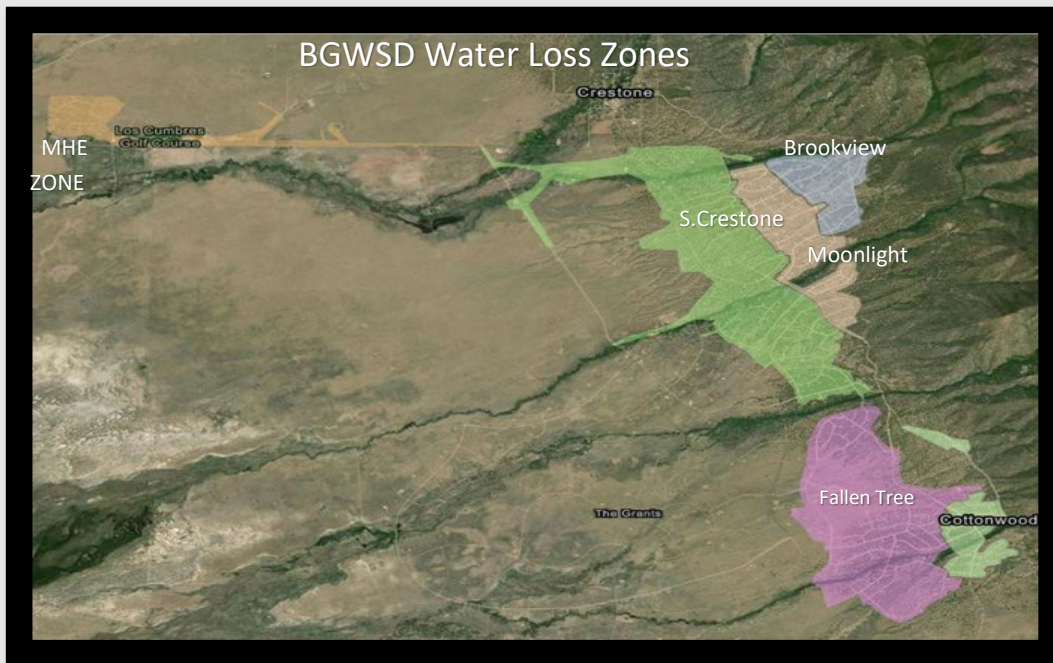
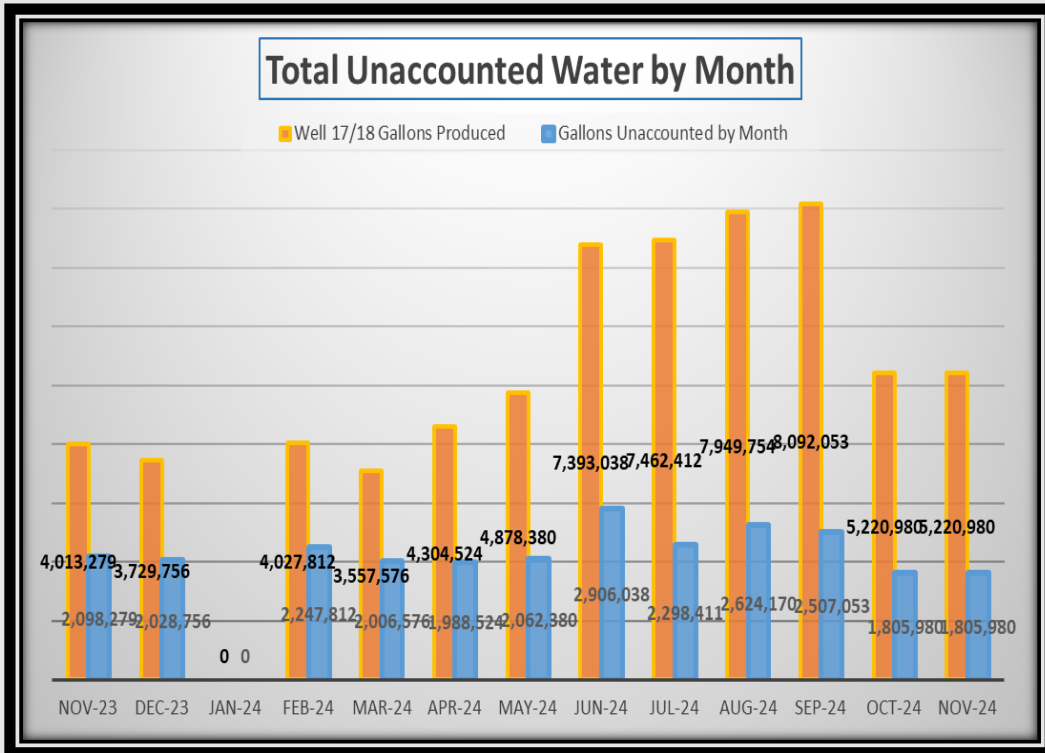
- Valve Maintenance- In process
- Collection System Cleaning- In Process
- Collection System Inspections-In-Process
- Fire Hydrant Maintenance- Completed
- Dig List (various projects that require excavation)- In Process
- Spanish creek manhole rehab Completed 10/24-25
- Facility Weed Control- Completed

### ➤ Unaccounted Water

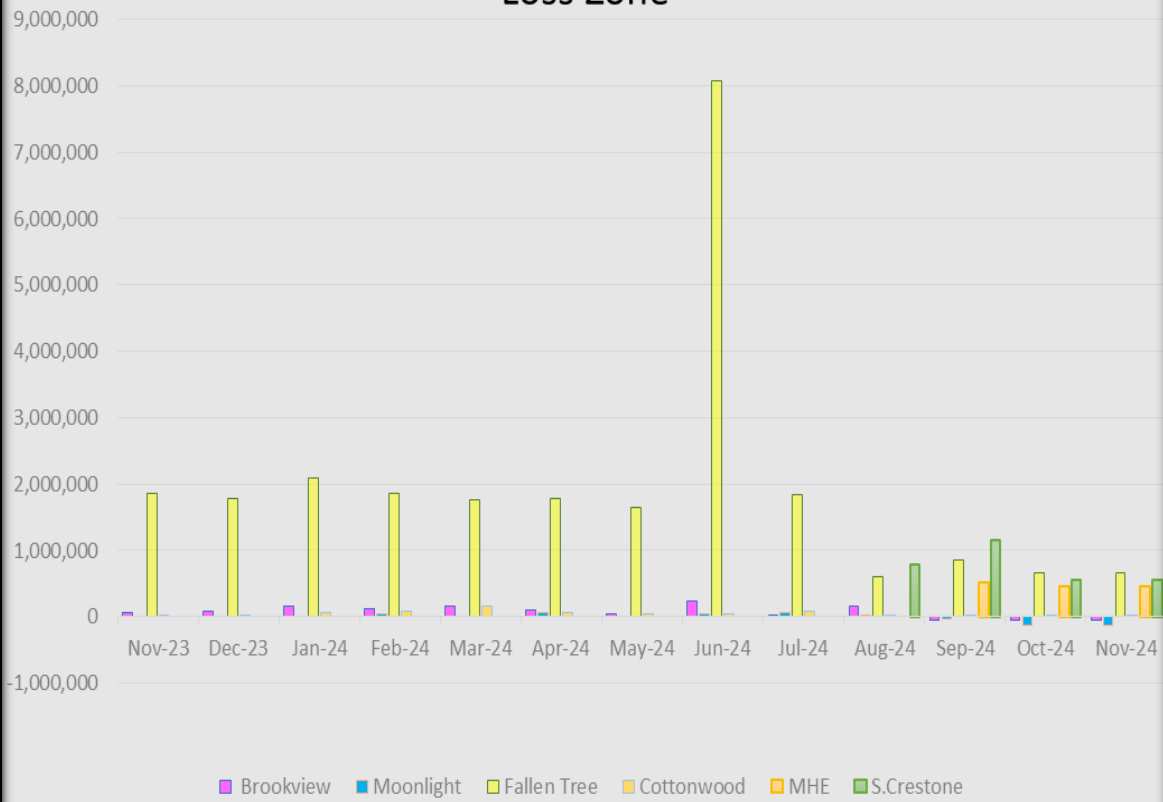
- Wells 17 and 18 produced 3,761,070 gallons of water in the month of November.
- The District sold its customers 1,883,000 gallons of water in the month of November, leaving 1,778,070 gallons unaccounted for.
- 47% of the water produced is unaccounted for in the month of November.

### ➤ Aspen WWTP and Town of Crestone Loading

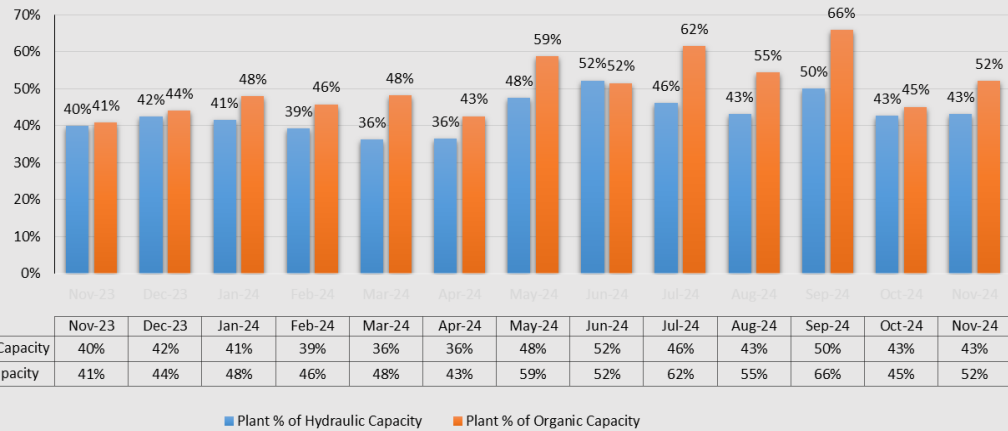
- Aspen WWTP averaged 43% of hydraulic loading capacity in the month of November, the Town of Crestone contributed an average of 16% of the treatment plants hydraulic load.
- Aspen WWTP averaged 52% of organic loading capacity in the month of November. The Town of Crestone contributed an average of 26% of the treatment plants organic load.



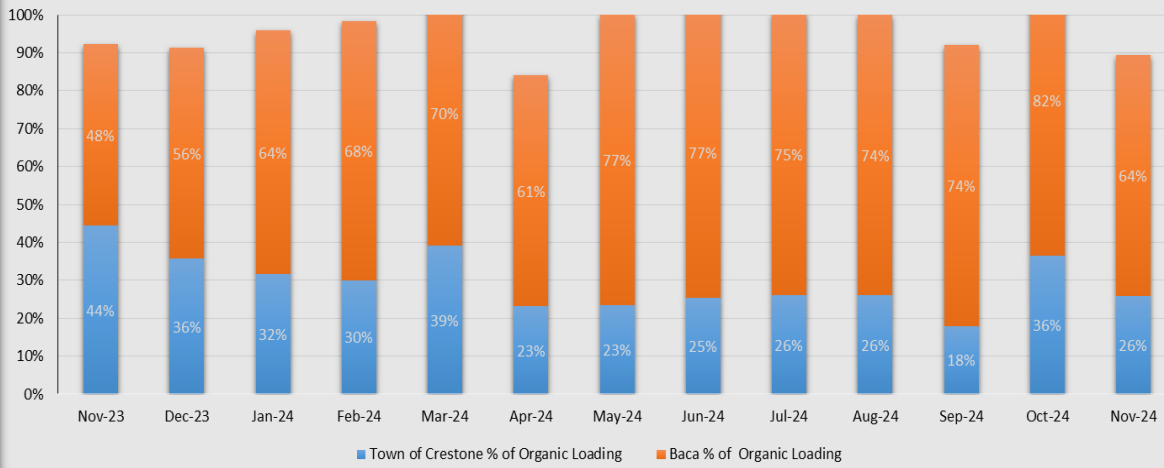
## Total Monthly Unaccounted in Gallons by Water Loss Zone



## Percentage of Plant Capacities by Month at Aspen Wastewater Treatment Plant



**Average % of Total Organic Loading of Aspen Wastewater Treatment Plant by Month of 2023-2024**



**Average % of Total Hydraulic Loading of Aspen Wastewater Treatment Plant by Month 2023-2024**

