

Baca Grande Water and Sanitation District
Monthly Operations Report

February 19th, 2025



Owl at Aspen Headworks

Facilities and Staff Updates

In Service

Repaired
last month

Out of
Service

Water Facilities											
Well 18		Moonlight Transfer Station		Ridgeview Transfer Station		Fallen Tree Transfer Station		Pinecone Booster Station		Shumei Booster Station	
Pump 1	Pump 2	Pump 1	Pump 2	Pump 1	Pump 2	Pump 1	Pump 2	Pump 1	Pump 2	Pump 1	Pump 2

Wastewater Facilities									
Aspen WWTP		Stables Lift Station		Wagon Wheel Lift Station		MHE Lift Station		Dharma Ocean Lift Station	
Pump 1	Pump 2	Pump 1	Pump 2	Pump 1	Pump 2	Pump 1	Pump 2	Pump 1	Pump 2

Service Vehicles				
Truck 1	Truck 2	Truck 3	Truck 4	Truck 5

Equipment				
Vactor Truck	Dump Truck	Backhoe	Skid steer	Excavator

➤ **No New Equipment Failure. No Vehicle Failures or updates to report**

- MHE Lift station pump one has been quoted and

➤ **Accidents**

- No Accidents to report on

Operations Updates

➤ Sanitary Survey

- Sanitary Survey scheduled for February 20th, 2025

➤ EIAF Grant Presentation

- EIAF Tier II grant application requires a presentation to the grant board, Presentation is set for March 5, at 1:30pm in Eaton CO.

➤ No Leaks to report

➤ Aspen WWTF

- The BOD 7 day average was out of compliance for January

➤ Projects

Winter Projects

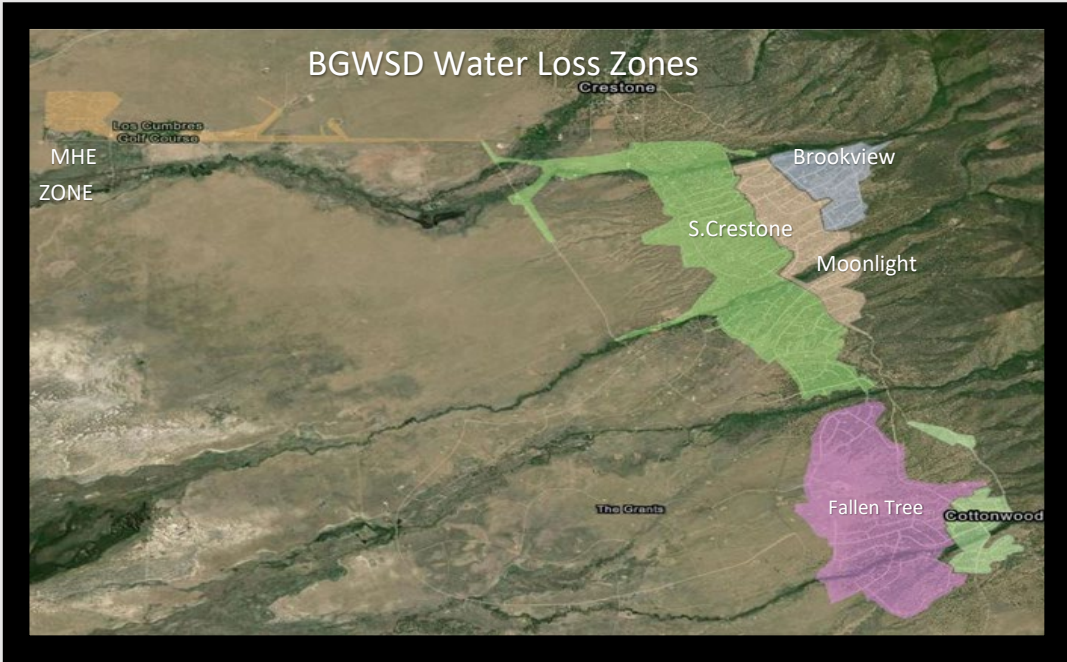
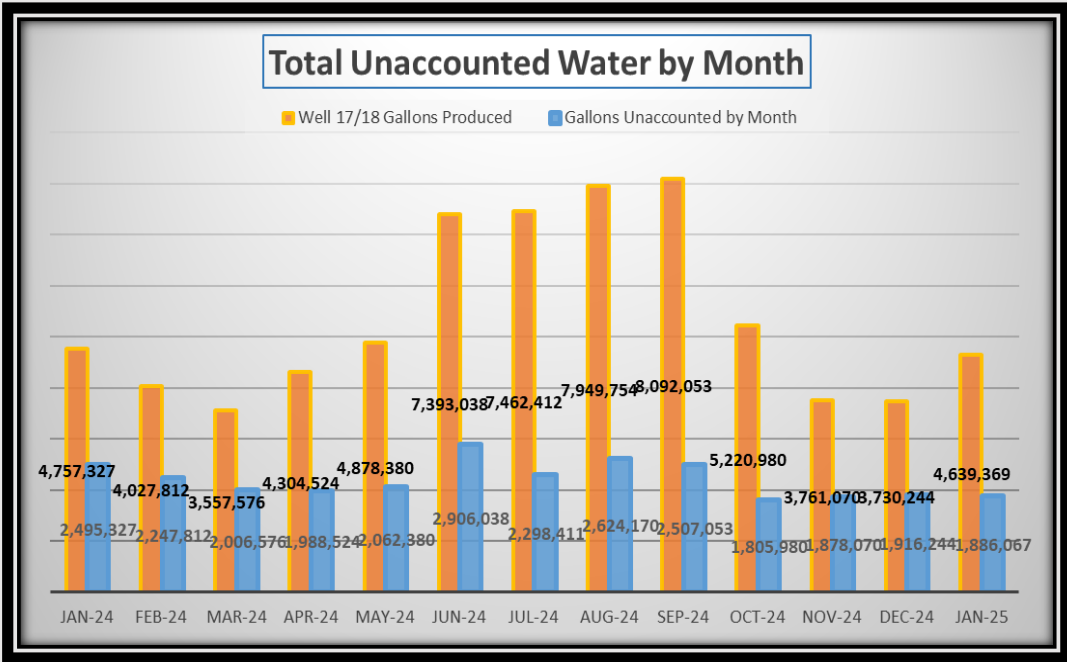
- Facility cleaning
- Vehicle Maintenance
- Headworks Maintenance
- Equipment Maintenance

➤ Unaccounted Water

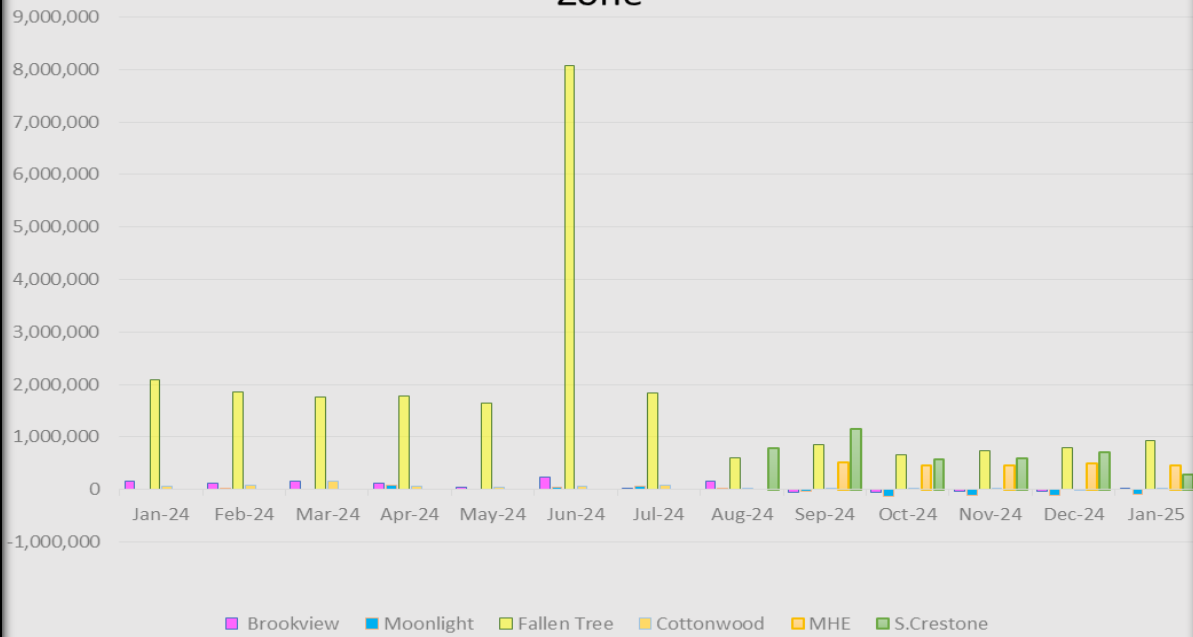
- Wells 17 and 18 produced 4,639,369 gallons of water in the month of January.
- The District sold its customers 1,886,067 gallons of water in the month of January, leaving 1,360,626 gallons unaccounted for.
- 41% of the water produced is unaccounted for in the month of January.

➤ Aspen WWTP and Town of Crestone Loading

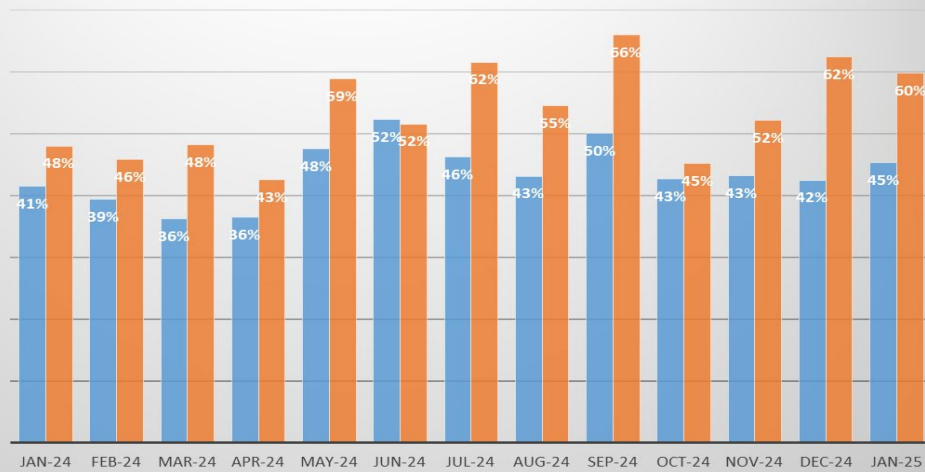
- Aspen WWTP averaged 45% of hydraulic loading capacity in the month of January, the Town of Crestone contributed an average of 21% of the treatment plants hydraulic load.
- Aspen WWTP averaged 60% of organic loading capacity in the month of January. The Town of Crestone contributed an average of 23% of the treatment plants organic load.



Total Monthly Unaccounted in Gallons by Water Loss Zone



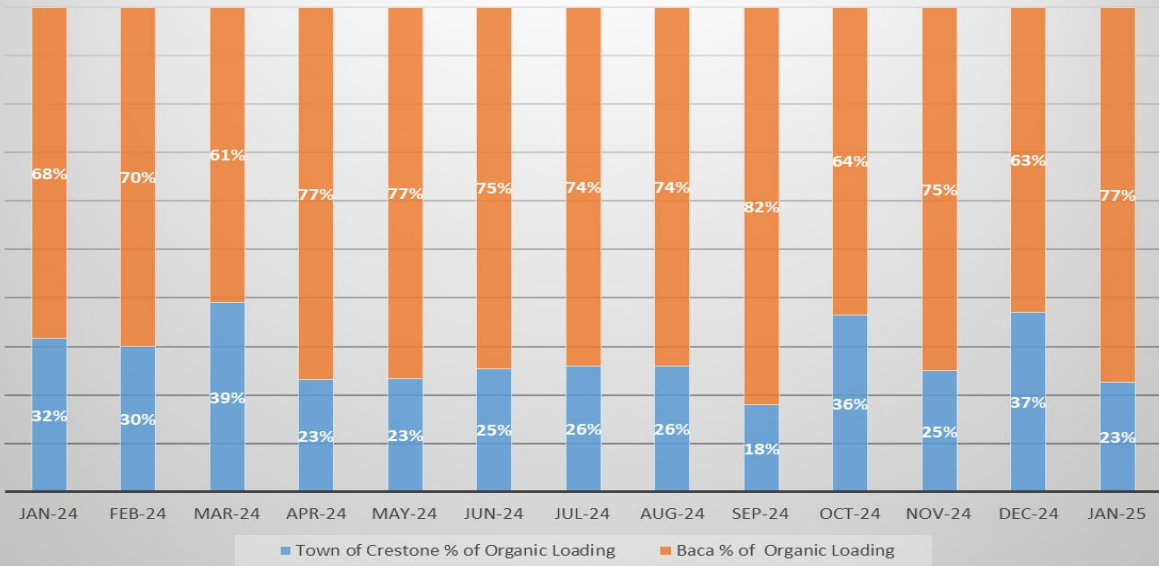
Percentage of Plant Capacities by Month at Aspen Wastewater Treatment Plant



	Jan-24	Feb-24	Mar-24	Apr-24	May-24	Jun-24	Jul-24	Aug-24	Sep-24	Oct-24	Nov-24	Dec-24	Jan-25
Plant % of Hydraulic Capacity	41%	39%	36%	36%	48%	52%	46%	43%	50%	43%	43%	42%	45%
Plant % of Organic Capacity	48%	46%	48%	43%	59%	52%	62%	55%	66%	45%	52%	62%	60%

Plant % of Hydraulic Capacity Plant % of Organic Capacity

Average % of Total Organic Loading of Aspen Wastewater Treatment Plant by Month of 2025



Average % of Total Hydraulic Loading of Aspen Wastewater Treatment Plant by Month 2025

